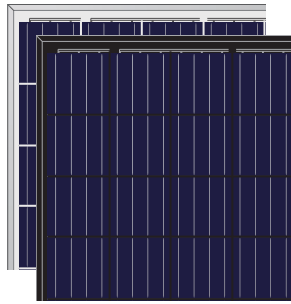


LINK ENERGY



PILOT 60-270W
250 - 280W
POLYCRYSTALLINE

Our panels come with a super robust frame, Link Energy's panels have a 40mm frame, this makes them stronger and more durable. We also utilise an IP67 Junction Box, as it is one of the most volatile parts of a solar panel we have made sure it is protected from the elements. We've taken our knowledge and combined it with the technology to ensure that our panels offer high efficiency with a stable output of power.

High efficiency, all the innovative manufacturing technology, brings high conversion efficiency (up to 16.49%)

Excellent temperature coefficient giving higher yields in the long term

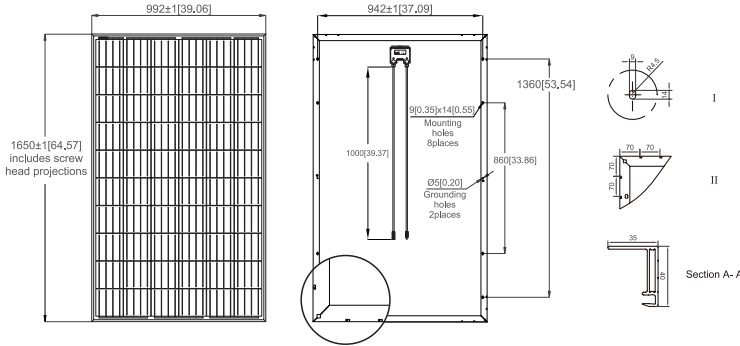
Certified to withstand increased loads of up to 5400Pa

Outstanding performance in weak-light conditions

4 busbar solar cells offering an excellent aesthetic appearance as well as remaining a stable output of solar power



Mechanical Details



Dimensions in brackets are in inches.
Un-bracketed dimensions are in millimeters.
Unit: mm[n.].

Electrical Data

ELECTRICAL DATA (STC*)

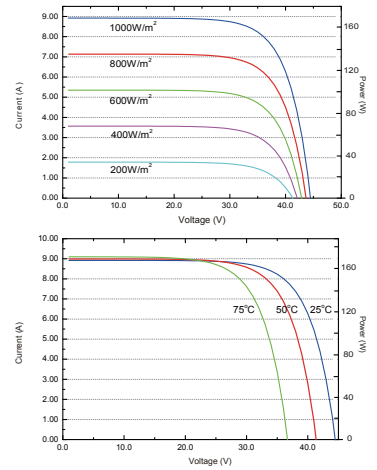
	250	255	260	265	270
Peak Power Watts- P_{MAX} (Wp)	250	255	260	265	270
Maximum Power Voltage- V_{MPP} (V)	31.70	31.90	32.10	32.40	32.70
Maximum Power Current- I_{MPP} (A)	7.92	8.00	8.10	8.18	8.28
Open Circuit Voltage- V_{OC} (V)	38.00	38.10	38.20	38.30	38.40
Short Circuit Current- I_{SC} (A)	8.55	8.60	8.67	8.73	8.82
Module Efficiency η_m (%)	15.3	15.6	15.9	16.2	16.5

* STC: Irradiance 1000 W/m², Cell Temperature 25°C, Air Mass AM1.5.

MECHANICAL DATA

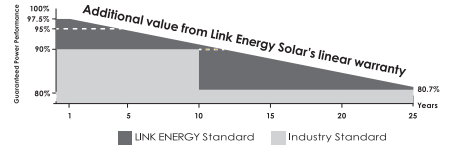
Solar cells	Polycrystalline 156 × 156 mm (6 inches)
Cell orientation	60 cells (6 × 10)
Module dimensions	1650 × 992 × 40 mm (65.0 × 39.1 × 1.6 inches)
Weight	18.6 kg (41 lb)
Glass	3.2 mm (0.13 inches), High Transmission, AR Coated Tempered Glass
Frame	Black / Silver
Backsheet	Black / White
J-Box	IP67
Cables	Photovoltaic Technology cable 4.0mm ² (0.006 inches ²), 900mm (35.46 inches)
Connector	Product Brand: MC Product Model: 32.0016P0001-JR (female cable coupler MC4) 32.0017P0001-JR (male cable coupler MC4)

I-V Curves



10 10 Years Product Warranty **25** 25 Years Performance Warranty

Linear Performance Warranty



MAXIMUM RATINGS

Operational Temperature	-40~+85°C
Maximum System Voltage	1000V DC (IEC)
Max Series Fuse Rating	15A

TEMPERATURE RATINGS

Nominal Operating Cell Temperature (T_{NOCT})	44°C (± 2°C)
Temperature Coefficient of P_{MAX}	- 0.39%/°C
Temperature Coefficient of V_{OC}	- 0.29%/°C
Temperature Coefficient of I_{SC}	0.05%/°C



POWERARK SOLAR Pty Ltd

Unit C8/391 Park Rd,
Regents Park NSW 2143
www.link-energy.com.au
(02) 9643 2492